

ETIQUETTE™  
COLORBODY™ PORCELAIN



Photo features Etiquette Brown 12 x 24 Unpolished and Textured on the floor and Beige 12 x 24 Unpolished and Textured on the wall.

Etiquette™ by American Olean® features both durability and beauty in design. Creative options are limitless with an assortment of six colors in three finishes – polished, unpolished and textured. Modular sizing and rectified edges allow for unique patterns, making it an attractive option for large projects where endurance and style are equally important.

**COLORBODY™ PORCELAIN FLOOR TILE - UNPOLISHED**



TAUPE ET03



WHITE ET01



BEIGE ET02



TAUPE ET03



GRAY ET04



BROWN ET05

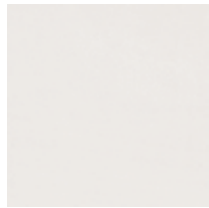


BLACK ET06

**COLORBODY™ PORCELAIN FLOOR TILE - POLISHED**



TAUPE ET03



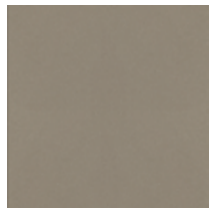
WHITE ET01



BEIGE ET02



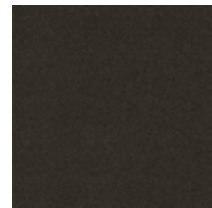
TAUPE ET03



GRAY ET04



BROWN ET05

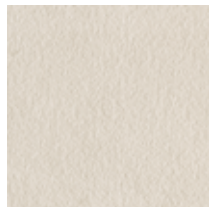


BLACK ET06

**COLORBODY™ PORCELAIN FLOOR TILE - TEXTURED**



TAUPE ET03



WHITE ET01



BEIGE ET02



TAUPE ET03



GRAY ET04



BROWN ET05



BLACK ET06






All or select items within this series meet the requirements for these qualifications. For more information, refer to p. 304.


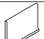



Photo features Etiquette™ White 12 x 24 Unpolished and Textured on the wall.

SIZES

			THICKNESS	SQ. FT./ CARTON	PIECES/ CARTON
	24 x 24 Floor Tile *▲	23-5/8" x 23-5/8" (60.00 cm x 60.00 cm)	3/8"	15.52	4
	12 x 24 Floor Tile *▲	11-3/4" x 23-5/8" (29.80 cm x 60.00 cm)	3/8"	11.52	6
	12 x 12 Floor Tile *	11-3/4" x 11-3/4" (29.80 cm x 29.80 cm)	3/8"	9.60	10

TRIM

			NUMBER	PIECES/ CARTON
	Floor Bullnose*	3 x 12	S-43C9	33
	Cove Base *□	6 x 12	P-36C9T	22
	Cove Base Outcorner *□	6 x 1	PC-36C9T	15

Cove base trim is intended to coordinate with floor tile in the standard 90-degree installation position.

Cove base and cove corner trim are suitable for non-freezing climates only.

\* Modular sizes ▲ Textured finish available in 12 x 24 only \* Unpolished finish □ Ceramic body

INSTALLATION & PRICING

RECOMMENDED GROUT JOINT:

Floor: 1/8" (3/16" when multiple sizes are installed in a modular pattern, and/or when installing tile with a length 15" or greater in a staggered brick-joint pattern; overlap should not exceed 33%.)

RELATIVE PRICING: High

SHADE VARIATION



MEDIUM  
(V2)

PERFORMANCE CHARACTERISTICS

	ASTM#	FLOOR RESULT
Water Absorption	C373	< 0.5%
Breaking Strength	C648	> 275 lbs.
Scratch Hardness	MOHS	8.0
Chemical Resistance	C650	Resistant
Abrasion Resistance	C1027	N/A

USAGE

FLOORS	WALLS	COUNTERTOPS
F	W	C

APPLICATIONS

	TARGET DCOF WET	SUITABLE
Dry & Level – Interior Floor	N/A	●
Wet & Level – Interior Floor	≥ 0.42	●*
Shower Floors (Residential or Light Commercial)	≥ 0.42	●
Exterior Floor Applications (including pool decking & other wet areas with minimal footwear)	≥ 0.60	●**
Ramps & Inclines	≥ 0.65	●
Walls/Backsplashes	N/A	●
Countertops	N/A	●
Pool Linings	N/A	●

A DCOF value of ≥ 0.42 is the standard for tiles specified for level interior spaces expected to be walked upon when wet, as stated in ANSI A137.1-2012, Section 9.6. For more information about DCOF and the DCOF AcuTest™, refer to p. 294.

APPLICATION NOTES:

Suitable for exterior applications in freezing and non-freezing climates, when proper installation methods are followed.

\* Unpolished and Textured finishes only

\*\* Textured finish only

NOTES

Since there are variations in all fired ceramic and natural products, tile and trim supplied for your particular installation may not match samples. Final confirmation should be made from actual tiles and trim prior to installation. Manufactured in accordance with ANSI A137.1 standards.

Not for use on ramps. Water, oil, grease, improper drainage and certain footwear can create slippery conditions. Floor applications expected to be exposed to these conditions require extra caution in product selection.

For additional information refer to "Factors to Consider" on p. 293.

Special consideration needs to be given when installing tiles greater than 15 inches. Please refer to [americanolean.com/LargeTiles](http://americanolean.com/LargeTiles) for more information.

Manufacturer Advisory: All tile is measured by the DCOF AcuTest™ method. Tiles with DCOF values <0.42 are not recommended for use in areas with wet or slippery conditions. For more information, see ANSI standard A137.1 section 6.2.2.1.10, available at [www.tileusa.com](http://www.tileusa.com).

Special care should be taken when grouting with dark pigmented colors. A grout release is recommended to prevent finely powdered pigments from lodging in the pores of the surface. Use of a latex modified thin-set is recommended for installation.

For information on Test Results & Classifications, see p. 294.

For Installation Considerations, Care & Maintenance information, see pp. 295-297.