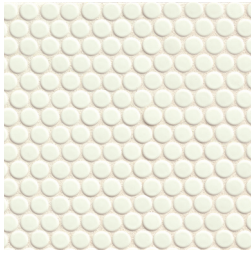
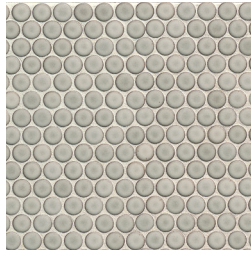


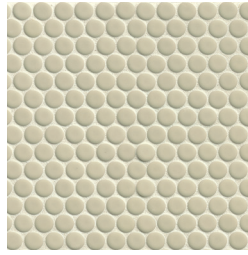
3/4" Penny Rounds Mosaic - Gloss (12"x12" Sheet)



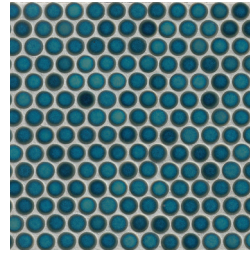
White - WHI  
DEC360WHI34G



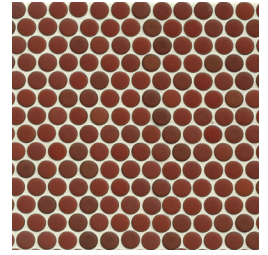
Dove Grey - DOG  
DEC360DOG34G



Off White - OFW  
DEC360OFW34G

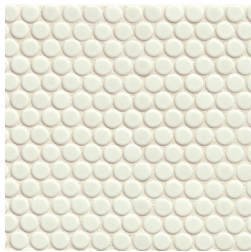


Lagoon - LAG  
DEC360LAG34G

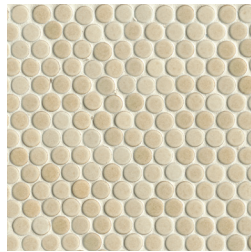


Cardinal - CAR  
DEC360CAR34G

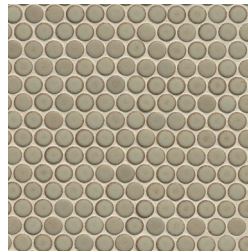
3/4" Penny Rounds Mosaic - Matte (12"x12" Sheet)



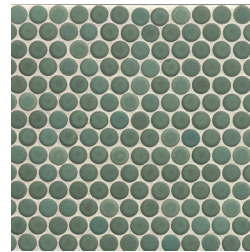
White - WHI  
DEC360WHI34M



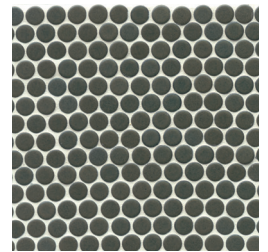
Beige - BEI  
DEC360BEI34M



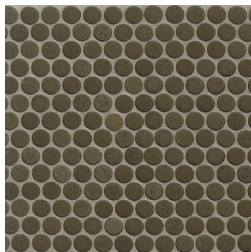
Pumice - PUM  
DEC360PUM34M



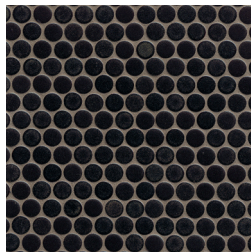
Silver Sage - SIS  
DEC360SIS34M



Iron - IRO  
DEC360IRO34M



Shale - SHA  
DEC360SHA34M



Charcoal - CHA  
DEC360CHA34M


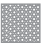


Photo Features 3/4" Penny Rounds Mosaic in White Matte & Pumice Matte.



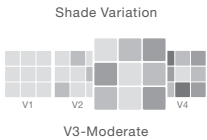


SIZING & PACKAGING

Type	Shape	Item Code	Size	Description	Pcs / Ctn	Sf / Ctn
Mosaic		DEC360***34G	12"x12" Sheet	3/4" Penny Rounds Mosaic - Gloss	10	10.00
		DEC360***34M	12"x12" Sheet	3/4" Penny Rounds Mosaic - Matte	10	10.00

ANSI TECHNICAL SPECIFICATIONS

	DCOF Acutest	Scratch Resistance MOHS	Breaking Strength ASTM# C648	Water Absorption ASTM# C373	Chemical Resistance ASTM# C650	Bond Strength A137.2-7.7	Thermal Shock ASTM# C484
Results	N/A	7	≥ 250 lbf	≤ 0.5%	Unaffected	Pass	N/A








APPLICATIONS

	Floors	Walls	Countertops	Shower Floors (Matte Only)	Shower Walls	Pools/Spas
Residential	●	◻	◻	●	◻	◻
Light Commercial	●	◻	◻	●	◻	◻
Commercial		◻	◻		◻	◻



LEGEND

-  Product rated for Interior & Exterior use
-  Product rated for Interior use only
-  May be suitable for Exterior Floors
-  Applications & ANSI Technical Specifications do not apply
-  Special Order only



The mesh backing on this tile has minimal glue to allow greater thinset coverage. To prevent the mosaics from falling off the mesh, keep the sheets as dry as possible while cutting. If necessary, place a light clear adhesive tape over the sheet while cutting to avert water. Install full sheets as much as possible. Fully embed 1/3 thickness of the tiles into the premium modified thinset.

Images and product samples are representative of a product's potential characteristics. There is no guarantee that the sample product or images will 100% match the product received. Field, mosaic, and trim tile may not be an exact match. Tiles are subject to variations in color, shade, size, surface texture and finish. Prior to installation, installer must blend tiles from several different boxes to achieve an even distribution of color range. Installer must conduct a dry mock layout under proper lighting conditions prior to installation. It is the consumer's responsibility to inspect the product prior to installation to ensure satisfaction. Once installed, the product is deemed accepted. Check Manufacturer's specifications as some Mosaic tiles may not be appropriate for wet applications. Reference the most current TCNA Handbook, ANSI, Manufacturer's specifications, and Bedrosians Care & Maintenance guide for installation, outdoor use, care and maintenance information. Improper installation, application, use, care and maintenance voids warranty. We reserve the right to make changes to product specifications at any time without notice. Please visit [www.bedrosians.com](http://www.bedrosians.com) for current product information.